



扬州市东电动力设备有限公司

Yangzhou East Power Equipment Co.,ltd

地址(Add): 江苏省扬州市江都区城北工业园区
Chengbei Industrial Zone, Yangzhou City Jiangsu Province, China

电话(Tel): 13813142225 15805253964

邮箱(E-mail): gary-goo@126.com

网址(Web): www.yzeastpower.com
www.eastpowergenset.com

扬州市东电动力设备有限公司

Yangzhou East Power Equipment Co.,ltd

公司简介:

扬州市东电动力设备有限公司座落于中国历史文化名城扬州市—江都，南临长江、西通古运河；京沪高速横跨南北、宁通高速穿境而过。公司有着多年发电机、柴油发电机组生产经验的单位，遵循以质量求生存、以科技求发展的宗旨，着重于新产品的开发和研究，在生产技术、产品质量都再上了一个新的台阶。

公司不断引进国际先进的企业管理模式和理念，吸引科研人才和技术型人才的加入，使得公司的研发和技术团队不断壮大！不论售前支持或是售后服务，带给用户最合理以及最完善的技术方案，解决广大用户的后顾之忧！

本公司严格按照GB/T2820、5-97国家标准生产成套国内外品牌柴油发电机组广泛应用高层办公楼、宾馆、医院、工矿、农村、山区野外作业，企事业、机关学校或专业户的动力和照明之用。主要产品有：半自动；全自动；低噪音；二轮、三轮、四轮移动式柴油机发电机组系列。规格型号从5KW-2400KW。配套康明斯(CUMMINS)、沃尔沃(VOLVO)、大宇(DAEWOO)、帕金斯(PERKINS)、道依茨(DEUTZ)、斯太尔、上柴、无动、帕欧(通柴)、潍柴、济柴、淄柴等柴油机，斯坦福、马拉松、利莱森玛、兰电等发电机。同时开发的智能化发电机组广泛用于电力、邮电、部队等部门，深受客户好评。本公司将以“客户至上，服务为先”的服务宗旨，为您提供全方位服务。

Company profile:

Yangzhou East Power Equipment Co.,Ltd as the leading manufacturer of diesel generator set, we specialize in producing, assembly, testing, installation, commissioning, sale and maintenance of the diesel genset.

We supply multiple brands of generator set, such as:

Cummins, Volvo, Deutz, Doosan Daewoo, MTU,

Ricardo, Perkins, Shangchai, Weichai, Baudouin,

Yuchai, etc. The style of genset is diverse, such as:

container generator, trailer generator, mobile generator,

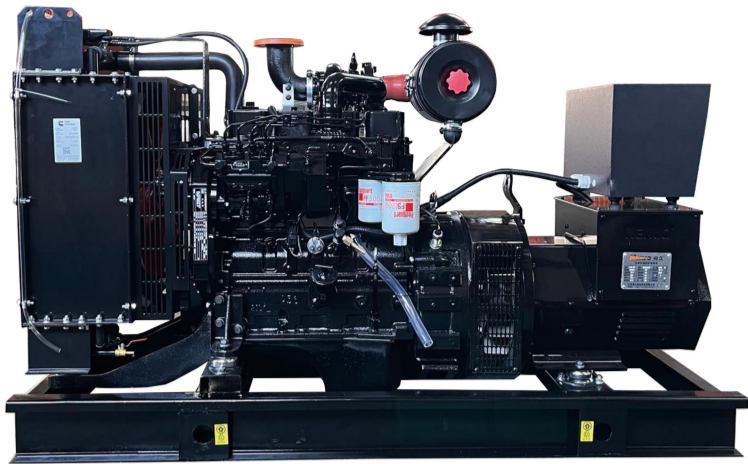
portable generator, and silent generator, open type

generator, etc. Besides, we also supply design and

construction of the noise reduction project up to the

customer's requirements.



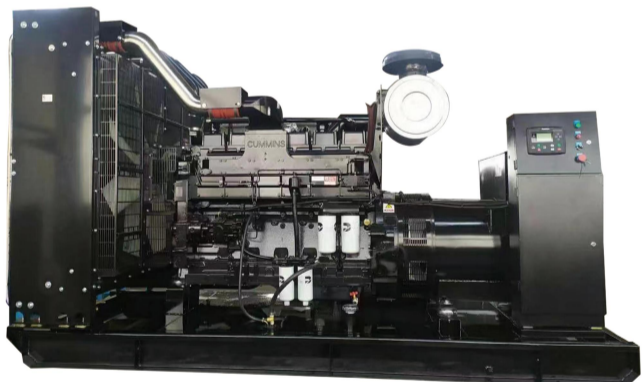


东风康明斯发动机有限公司位于湖北省襄阳市高新技术产业开发区，是由东风汽车股份有限公司和美国康明斯公司以50:50的股权比例合资兴建的现代化中重型发动机制造公司。

公司于1996年6月成立，注册资本逾一亿美元，总占地面积26.23公顷，现有员工2,500人。扬州市东电力设备有限公司生产的东风康明斯发电机组采用全球领先的工程技术与分析工具并结合中国用户使用状况设计，发动机具备更强的高海拔运行能、低温运行和大负荷持续运行能力，零下40至60摄氏度、5200米海拔发动机都可运转自如。

Dongfeng cummins engine co., LTD. Is located in Xiangyang city, Hubei province high and new technology industry development zone, is made up of dongfeng motor co., LTD., and the shareholding proportions of the United States cummins company with 50:50 joint venture to build modern medium-duty engine manufacturing company. The company was established in June 1996 with a registered capital of over \$100 million, covering a total area of 26.23 hectares with 2,500 employees.

Yangzhou East Power Equipment Co.,Ltd production of the cummins generator set by the world's leading engineering and design analysis tools and combined with users use condition, the engine has more high altitude operation can run, low temperature and heavy load continuous operation ability, minus 40 to 60 degrees Celsius, at an altitude of 5200 meters engine can operate freely. Excellent applicability to the weight of the ultra high power density and higher power density for users to install and transport, making it easy for users to maintain a lower emissions, using built-in purification scheme, can satisfy hospitals, schools and places of more strict requirements on emissions of use requirements.



重庆康明斯发动机有限公司系中美合资企业，成立于1995年10月，位于重庆市沙坪坝区烈士墓。中方母公司是重庆机电股份有限公司，外方母公司是美国康明斯（中国）投资有限公司，双方投资比例各占50%。现有员工1400余人。重庆康明斯的前身是重庆汽车发动机厂，从二十世纪五十年代开始柴油机的设计制造。

重庆康明斯是康明斯在中国本土化生产的起点，是康明斯在中国最大的重载和大马力发动机专业制造工厂。1981年，康明斯与原中国重汽集团正式签署许可证协议，开始在重庆生产康明斯大马力柴油机。历经多年的发展，双方的合作不断深化。重庆康明斯一直是康明斯公司在华业务迅猛增长的重要推动力量。

扬州市东电力设备有限公司作为重庆康明斯长期合作伙伴，一直以完美的生产工艺维护其形象，重庆康明斯也是东电力极力推荐的品牌之一。

Chongqing cummins engine co., Ltd is a sino-us joint venture, was established in October 1995, located in the tomb of the Shapingba district, chongqing. The parent company of China is Chongqing electromechanical co., Ltd., the parent company of which is Cummins (China) investment co., Ltd., and the investment proportion of both parties is 50%. There are more than 1400 employees. Chongqing cummins, the predecessor of the Chongqing automobile engine plant, began the design and manufacture of diesel engines in the 1950s.

Cummins is the starting point of cummins' localization production in China. It is cummins manufacturing plant in China's largest heavy-duty and high-horsepower engine. In 1981, cummins formally signed a license agreement with the original sinotruk group and began to produce cummins diesel engine in Chongqing. After years of development, the cooperation between the two sides has been deepened. Chongqing cummins has been an important driving force for the rapid growth of cummins inc. in China.

Yangzhou East Power Equipment Co.,Ltd as a long-term partner of chongqing cummins, has been in perfect production process to maintain its image, chongqing cummins east electric highly recommend is one of the brand.

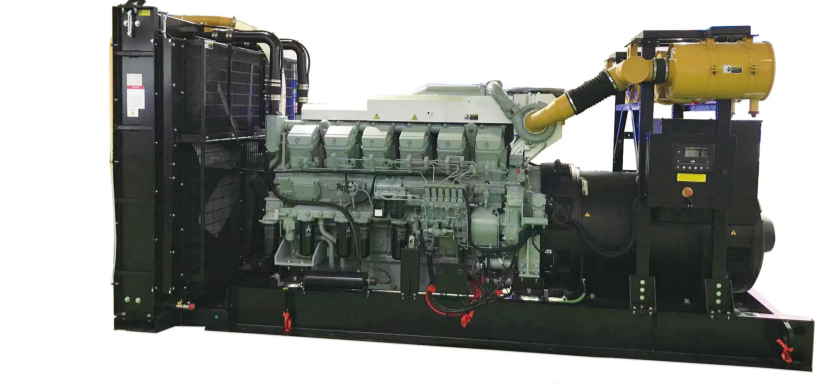
机组技术参数 GENERATOR SET TECHNICAL PARAMETER					发动机技术参数 ENGINE TECHNICAL PARAMETER							
机组型号 Genset Model	主用功率 Prime Power KW	备用功率 Standby Power KW	调速方式 Speed Control Mode	外形尺寸 Dimension		重量 Weight KG	发动机型号 Engine Model	发动机功率 Engine Power	缸数*缸径*行程 Cylinders*Bore*Stroke MM*MM	燃油消耗率 Fuel Consumption Rate g/kw.h	排量 Displacement L	润滑油容量 Lube Volume L
				长*宽*高 L*W*H	MM							
DD-C16GF	16	18	M	1580*630*1080	580	483.9-G11	20.22KW	4*102*120	≤245	3.9	11	
DD-C20GF	20	22	M	1600*630*1080	600	483.9-G11	24.27KW	4*102*120	≤245	3.9	11	
DD-C20GF	20	22	E	1600*630*1080	600	483.9-G2	24.27KW	4*102*120	≤229	3.9	11	
DD-C24GF	24	27	E	1600*630*1080	620	483.9-G12	27.30KW	4*102*120	≤227	3.9	11	
DD-C30GF	30	33	M	1650*730*1100	650	48T3.9-G1	36.40KW	4*102*120	≤229	3.9	11	
DD-C30GF	30	33	E	1650*730*1100	650	48T3.9-G2	36.40KW	4*102*120	≤214	3.9	11	
DD-C40GF	40	44	E	1700*730*1100	680	48TA3.9-G2	50.55KW	4*102*120	≤213	3.9	11	
DD-C50GF	50	55	E	1700*730*1100	680	48TA3.9-G2	58.64KW	4*102*120	≤212	3.9	11	
DD-C60GF	60	66	E	1830*730*1120	700	48TA3.9-G11	70.80KW	4*102*120	≤208	3.9	11	
DD-C80GF	80	88	E	1900*750*1200	800	48TA3.9-G13	87.97KW	4*102*120	≤208	3.9	11	
DD-C85GF	85	93	E	1900*760*1200	900	48TAA3.9-G3	96.106KW	4*102*120	≤206	3.9	11	
DD-C80GF	80	88	M	2100*800*1200	1000	6BT5.9-G1	86.92KW	6*102*120	≤228	5.9	16	
DD-C80GF	80	88	E	2100*800*1200	1000	6BT5.9-G2	86.92KW	6*102*120	≤212	5.9	16	
DD-C85GF	85	93	E	2180*800*1350	1000	6BT5.9-G2	96.106KW	6*102*120	≤212	5.9	16	
DD-O90GF	90	100	E	2250*800*1350	1100	6BTA5.9-G2	106.116KW	6*102*120	≤211	5.9	16	
DD-C100GF	100	110	E	2350*820*1350	1200	6BTA5.9-G2	120.132KW	6*102*120	≤208	5.9	16	
DD-C128GF	128	140	E	2350*820*1350	1300	6BTA5.9-G12	140.159KW	6*102*120	≤206	5.9	16	
DD-C150GF	150	165	M	2400*850*1450	1500	6CTA8.3-G1	163.180KW	6*114*135	≤215	8.3	28	
DD-C150GF	150	165	E	2400*850*1450	1500	6CTA8.3-G2	163.180KW	6*114*135	≤211	8.3	28	
DD-C160GF	160	180	E	2500*850*1450	1600	6CTA8.3-G2	183.203KW	6*114*135	≤205	8.3	28	
DD-C200GF	NA	200	E	2500*860*1450	1650	6CTA8.3-G9	—/231KW	6*114*135	≤202	8.3	28	
DD-C200GF	200	220	E	2600*1020*1550	1700	6LTA48.9-G2	220.240KW	6*114*135	≤197	8.9	28	
DD-C200GF	200	220	E	2600*1020*1550	1700	6LTA48.9-G3	230.250KW	6*114*135	≤195	8.9	28	
DD-C200GF	220	240	E	2700*1100*1650	1900	6LTA49.5-G3	250.280KW	6*114*135	≤193	9.5	32	
DD-C250GF	250	280	E	2700*1100*1650	1900	6LTA49.5-G1	290.320KW	6*114*135	≤199	9.5	32	
DD-C300GF	300	330	E	3000*1400*1850	2500	6ZTA13-G3	340.380KW	6*130*163	≤198	13	45	
DD-C350GF	350	380	E	3000*1400*1850	2500	6ZTA13-G2	390.419KW	6*130*163	≤198	13	45	
DD-C360GF	360	400	E	3100*1400*1850	2550	6ZTA13-G4	400.415KW	6*130*163	≤197	13	45	
DD-C360GF	360	400	ECM	3150*1450*1950	2800	QS213-G2	400.440KW	6*130*163	≤191	13	45	
DD-C380GF	380	420	ECM	3150*1450*1950	2800	QS213-G5	411.470KW	6*130*163	≤193	13	45	
DD-C400GF	400	440	ECM	3150*1450*1950	2900	QS213-G3	450.470KW	6*130*163	≤195	13	45	
DD-C420GF	420	460	ECM	3200*1450*1950	2900	QS213-G10	463.509KW	6*130*163	≤197	13	45	
DD-C450GF	450	500	ECM	3300*1500*2000	3000	QS213-G11	512.562KW	6*130*163	≤198	13	45	
DD-C50GF	50	55	ECM	1700*730*1100	680	QSB3.9-G2	63.70KW	4*102*120	≤230	3.9	11	
DD-C64GF	64	70	ECM	1830*730*1120	750	QSB3.9-G3	79.88KW	4*102*120	≤214	3.9	11	
DD-C88GF	88	96	ECM	1900*760*1200	900	QSB3.9-G39	100.110KW	4*102*120	≤210	3.9	11	
DD-C80GF	80	88	ECM	2180*800*1350	1000	QSB5.9-G2	96.106KW	6*102*120	≤224	5.9	16	
DD-C100GF	100	110	ECM	2350*820*1350	1200	QSB5.9-G3	120.132KW	6*102*120	≤215	5.9	16	
DD-C128GF	128	140	ECM	2400*850*1400	1300	QSB5.9-G33	159.175KW	6*102*120	≤210	5.9	16	
DD-C120GF	120	132	ECM	2500*950*1450	1350	QSB6.7-G3	151.169KW	6*107*124	≤208	6.7	18	
DD-C144GF	144	160	ECM	2500*950*1450	1350	QSB6.7-G4	168.185KW	6*107*124	≤213	6.7	18	
DD-C160GF	160	180	ECM	2550*950*1500	1350	QSB6.7-G31	209.230KW	6*107*124	≤203	6.7	16	
DD-C160GF	160	180	ECM	2550*1020*1550	1500	QSL8.9-G2	206.226KW	6*114*145	≤203	8.9	28	
DD-C180GF	180	200	ECM	2600*1020*1550	1500	QSL8.9-G3	220.242KW	6*114*145	≤203	8.9	28	
DD-C200GF	200	220	ECM	2600*1020*1550	1700	QSL8.9-G4	235.258KW	6*114*145	≤203	8.9	28	
DD-C250GF	250	280	ECM	2700*1100*1650	1900	QSL8.9-G30	301.331KW	6*114*145	≤203	8.9	28	
DD-C280GF	280	300	ECM	3050*1350*1850	2500	QS213-G6	328.374KW	6*130*163	≤197	13	45	
DD-C320GF	320	350	ECM	3100*1350*1850	2700	QS213-G7	367.419KW	6*130*163	≤197	13	45	

机组技术参数 GENERATOR SET TECHNICAL PARAMETER					发动机技术参数 ENGINE TECHNICAL PARAMETER							
机组型号 Genset Model	主用功率 Prime Power KW	备用功率 Standby Power KW	调速方式 Speed Control Mode	外形尺寸 Dimension		重量 Weight KG	发动机型号 Engine Model	发动机功率 Engine Power	缸数*缸径*行程 Cylinders*Bore*Stroke MM*MM	燃油消耗率 Fuel Consumption Rate g/kw.h	排量 Displacement L	润滑油容量 Lube Volume L
				长*宽*高 L*W*H	MM							
DD-C200GF	200	220	E	2900*950*1700	2400	MTA11-G2	224.246KW	6*125*147	≤200	10.8	36.7	
DD-C250GF	250	280	E	3000*1000*1700	2500	MTA11-G3	282.310KW	6*125*147	≤200	10.8	36.7	
DD-C200GF	200	220	E	3000*980*1700	2600	NT855-GA	231.254KW	6*140*152	≤206	14	38.6	
DD-C200GF	200	220	E	3000*1000*1750	2650	NTA855-G1	240.264KW	6*140*152	≤206	14	38.6	
DD-C220GF	220	250	E	3100*1000*1760	2650	NTA855-G1A	264.291KW	6*140*152	≤206	14	38.6	
DD-C250GF	250	280	E	3100*1000*1760	2650	NTA855-G1B	284.321KW	6*140*152	≤206	14	38.6	
DD-C250GF	250	280	E	3100*1050*1760	2700	NTA855-G2	283.321KW	6*140*152	≤204	14	38.6	
DD-C275GF	275	300	E	3100*1050*1760	2700	NTA855-G2A	312.343KW	6*140*152	≤204	14	38.6	
DD-C280GF	280	310	E	3100*1050*1780	2750	NTA855-G4	317.351KW	6*140*152	≤208	14	38.6	
DD-C300GF	300	330	E	3100*1050*1780	2800	NTA855-G7	343.377KW	6*140*152	≤208	14	38.6	
DD-C360GF	NA	360	E	3300*1300*1800	2900	NTA855-G7A	—/407KW	6*140*152	≤206	14	38.6	
DD-C300GF	300	330	E	3400*1250*1900	3200	KTA19-G2	336.370KW	6*159*159	≤210	19	50	
DD-C360GF	360	400	E	3400*1300*1900	3200	KTA19-G3	403.448KW	6*159*159	≤212	19	50	
DD-C400GF	400	450	E	3450*1360*1950	3500	KTA19-G3A	448.504KW	6*159*159	≤212	19	50	
DD-C400GF	400	450	E	3500*1360*1950	3600	KTA19-G4	448.504KW	6*159*159	≤211	19	50	
DD-C420GF	420	500	E	3700*1400*2000	4300	KTA19-G5	470.555KW	6*159*159	≤208	19	50	
DD-C460GF	460	520	E	3650*1500*2000	4500	KTA19-G6	520.570KW	6*159*159	≤209	19	50	
DD-C520GF	NA	520	E	3650*1550*2000	4500	KTA19-G8	—/575KW	6*159*159	≤210	19	50	
DD-C550GF	NA	550	E	3700*1600*2050	4800	KTA19-G6A	—/610KW	6*159*159	≤212	19	50	
DD-C500GF	500	560	E	4300*1700*2350	6000	KT38-G	560.610KW	12*159*159	≤215	38	135	
DD-C580GF	580	640	E	4300*1750*2380	6800	KT38-GA	647.711KW	12*159*159	≤212	38	135	
DD-C570GF	570	630	E	4300*1750*2380	6800	KTA38-G1	634.701KW	12*159*159	≤207	38	135	
DD-C570GF	570	630	E	4300*1750*2380	6800	KTA38-G1B	634.701KW	12*159*159	≤205	38	135	
DD-C600GF	600	660	E	4350*1800*2400	7000	KTA38-G2	664.731KW	12*159*159	≤203	38	135	
DD-C640GF	640	710	E	4500*1800*2450	7200	KTA38-G2B	711.789KW	12*159*159	≤203	38	135	
DD-C720GF	720	800	E	4600*1850*2450	7300	KTA38-G2A	813.895KW	12*159*159	≤208	38	135	
DD-C800GF	800	880	E	4650*1850*2450	8500	KTA38-G5	880.970KW	12*159*159	≤208	38	135	
DD-C1000GF	NA	1000	E	4700*1900*2500	9000	KTA38-G9	—/1089KW	12*159*159	≤207	38	135	
DD-C1000GF	1000	1100	E	5400*2250*2500	9900	KTA50-G3	1097.122KW	16*159*159	≤211	50	177	
DD-C1000GF	1000	1100	E	5400*2150*2500	9500	KTA50-G12	1148.121KW	16*159*159	≤213	50	177	
DD-C1100GF	1100	1200	E	5600*2150*2500	11000	KTA50-G12A	1200.1412KW	16*159*159	≤205	50	177	
DD-C1100GF	1100	1250	E	5500*2250*2500	11000	KTA50-G8	1200.1429KW	16*159*159	≤207	50	204	

重庆康明斯系列 (二) Cummins series

三菱系列 Mitsubishi series

机组技术参数 GENERATOR SET TECHNICAL PARAMETER					发动机技术参数 ENGINE TECHNICAL PARAMETER						
机组型号 GenSet Model	主用功率 Prime Power	备用功率 Standby Power	调速方式 Speed Control Mode	外形尺寸 Dimension 长×宽×高 L*W*H MM	重量 Weight KG	发动机型号 Engine Model	发动机功率 Engine Power	缸数/缸径/行程 Cylinders/Bore/Stroke MM*MM	燃油消耗率 Fuel Consumption Rate g/kw.h	排量 Displacement L	润滑油容量 Lube Volume L
	KW	KVA				发动机功率 Engine Power	缸数/缸径/行程 Cylinders/Bore/Stroke MM*MM	燃油消耗率 Fuel Consumption Rate g/kw.h	排量 Displacement L	润滑油容量 Lube Volume L	
DD-C200GF	200	220	ECM	3050*1150*1800	2500	QSN7-66	243/265KW	6*140*152	≤210	14	38.6
DD-C220GF	220	250	ECM	3050*1150*1800	2600	QSN7-67	261/291KW	6*140*152	≤210	14	38.6
DD-C250GF	250	280	ECM	3050*1150*1800	2600	QSN7-61	291/325KW	6*140*152	≤210	14	38.6
DD-C280GF	280	310	ECM	3300*1200*1900	2700	QSN7-62	321/358KW	6*140*152	≤210	14	38.6
DD-C320GF	320	350	ECM	3300*1200*1900	2800	QSN7-63	358/392KW	6*140*152	≤210	14	38.6
DD-C360GF	360	400	ECM	3350*1250*2000	3400	QSN7-64X	407/448KW	6*140*152	≤211	14	38.6
DD-C360GF	360	400	ECM	3500*1460*2100	3400	QSK19-G14	402/447KW	6*159*159	≤209	19	84
DD-C360GF	360	400	ECM	3500*1460*2100	3450	QSK19-G15	405/448KW	6*159*159	≤209	19	84
DD-C400GF	400	440	ECM	3500*1460*2100	3550	QSK19-G16	445/493KW	6*159*159	≤209	19	84
DD-C400GF	400	440	ECM	3500*1460*2100	3600	QSK19-G13	451/501KW	6*159*159	≤209	19	84
DD-C450GF	450	500	ECM	3500*1500*2150	3800	QSK19-G12	503/565KW	6*159*159	≤209	19	84
DD-C450GF	450	500	ECM	3500*1500*2150	3800	QSK19-G17	505/558KW	6*159*159	≤209	19	84
DD-C470GF	470	520	ECM	3500*1500*2150	4000	QSK19-G6	520/595KW	6*159*159	≤209	19	84
DD-C500GF	500	550	ECM	3600*1550*2200	4200	QSK19-G18	564/624KW	6*159*159	≤209	19	84
DD-C520GF	520	570	ECM	3600*1550*2200	4500	QSK19-G4	574/634KW	6*159*159	≤209	19	84
DD-C550GF	550	600	ECM	3600*1550*2200	4800	QSK19-G19	606/671KW	6*159*159	≤210	19	84
DD-C550GF	550	600	ECM	3600*1550*2200	4800	QSK19-G11	606/667KW	6*159*159	≤211	19	84
DD-C600GF	600	660	ECM	3800*1600*2200	5500	QSK19-G20	668/739KW	6*159*159	≤211	19	84
DD-C650GF	650	720	ECM	3800*1600*2200	5700	QSK19-G21	724/801KW	6*159*159	≤212	19	84
DD-C650GF	600	660	ECM	4200*1700*2400	6000	QSK38-08	657/730KW	12*159*159	≤214	38	170.3
DD-C650GF	650	700	ECM	4200*1700*2400	6200	QSK38-67	705/783KW	12*159*159	≤213	38	170.3
DD-C720GF	720	800	ECM	4200*1700*2400	6400	QSK38-66	791/878KW	12*159*159	≤209	38	170.3
DD-C720GF	720	800	ECM	4250*1800*2400	6500	QSK38-09	826/911KW	12*159*159	≤209	38	170.3
DD-C800GF	800	880	ECM	4300*1900*2450	6800	QSK38-G1	876/970KW	12*159*159	≤206	38	170.3
DD-C800GF	800	880	ECM	4300*1900*2450	7000	QSK38-G10	903/997KW	12*159*159	≤208	38	170.3
DD-C900GF	900	1000	ECM	4500*1950*2450	7200	QSK38-G2	989/1096KW	12*159*159	≤208	38	170.3
DD-C900GF	900	1000	ECM	4550*1950*2450	7500	QSK38-G11	1022/1129KW	12*159*159	≤206	38	170.3
DD-C1000GF	1000	1100	ECM	4750*1950*2450	8200	QSK38-05	1107/1224KW	12*159*159	≤206	38	170.3
DD-C1000GF	1000	1100	ECM	4850*2000*2480	9000	QSK38-G12	1134/1254KW	12*159*159	≤208	38	170.3
DD-C1080GF	1080	1200	ECM	4900*2000*2500	10000	QSK38-G19	1183/1333KW	12*159*159	≤202	38	170.3
DD-C1120GF	1120	1200	ECM	5000*2050*2500	11000	QSK38-G13	1239/1371KW	12*159*159	≤209	38	170.3
DD-C1200GF	1200	1320	ECM	5200*2100*2500	12000	QSK38-G14	1346/1489KW	12*159*159	≤210	38	170.3
DD-C1280GF	1280	1400	ECM	5400*2200*2500	12500	QSK38-G15	1399/1548KW	12*159*159	≤210	38	170.3



三菱一直是国内发电运营商和设备厂商值得信赖的合作伙伴。致力于通过世界领先的技术实力，提供更高效率更稳定的能源解决方案和更可靠的售后服务，助力中国双碳目标的实现，为全球的能源脱碳化和电力稳定供给做出贡献，实现可持续发展的未来。

三菱动力根据用途及规模提供各种发电成套设备。这些设备的高效率及可靠性，出色的可操作性和易于维护等，得到了用户的高度评价，在世界范围内获得了广泛的业绩。

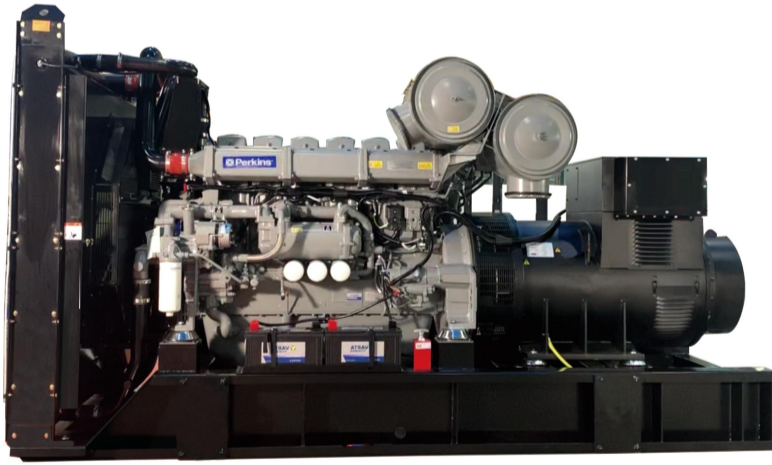
Mitsubishi Power is creating a future that works for people and the planet by developing innovative power generation technology and solutions to enable the decarbonization of energy and deliver reliable power everywhere.

机组技术参数 GENERATOR SET TECHNICAL PARAMETER					发动机技术参数 ENGINE TECHNICAL PARAMETER						
机组型号 GenSet Model	主用功率 Prime Power	备用功率 Standby Power	调速方式 Speed Control Mode	外形尺寸 Dimension 长×宽×高 L*W*H MM	重量 Weight KG	发动机型号 Engine Model	发动机功率 Engine Power	缸数/缸径/行程 Cylinders/Bore/Stroke MM*MM	燃油消耗率 Fuel Consumption Rate g/kw.h	排量 Displacement L	润滑油容量 Lube Volume L
	KW	KVA				发动机功率 Engine Power	缸数/缸径/行程 Cylinders/Bore/Stroke MM*MM	燃油消耗率 Fuel Consumption Rate g/kw.h	排量 Displacement L	润滑油容量 Lube Volume L	
DD-S450GF	450	500	E	3600*1550*2100	4600	S6R-PTA	500/555KW	6*170*220	≤205	29.96	100
DD-S540GF	540	600	E	3600*1550*2100	4600	S6R2-PTA	575/635KW	6*170*220	≤205	29.96	100
DD-S600GF	600	660	E	4000*1750*2300	5700	S6R2-PTAA	645/710KW	6*170*220	≤211	29.96	94
DD-S600GF	600	660	E	4200*1760*2500	6600	S12A2-PTA	656/724KW	12*150*160	≤217	33.93	120
DD-S640GF	640	710	E	4200*1760*2500	6600	S12A2-PTA2	742/818KW	12*150*160	≤224	33.93	120
DD-S800GF	800	880	E	4300*2000*2400	7200	S12H-PTA	890/980KW	12*157*175	≤200	37.10	200
DD-S1000GF	1000	1100	E	4300*1950*2400	7100	S12R-PTA	1080/1190KW	12*170*180	≤208	49.03	180
DD-S1100GF	1100	1200	E	5000*2000*2500	9500	S12R-PTA2	1165/1285KW	12*170*180	≤209	49.03	180
DD-S1200GF	1200	1320	E	5700*2100*2500	11100	S12R-PTAA2	1277/1404KW	12*170*180	≤200	49.03	180
DD-S1350GF	1350	1500	E	5700*2220*2600	14300	S16R-PTA	1450/1590KW	16*170*180	≤200	65.37	230
DD-S1500GF	1500	1650	E	5750*2650*2900	14900	S16R-PTA2	1600/1760KW	16*170*180	≤208	65.37	230
DD-S1600GF	1600	1800	E	5800*2650*3000	16200	S16R-PTAA2	1684/1895KW	16*170*180	≤199	65.37	230
DD-S1800GF	1800	2000	E	6500*2700*3200	17600	S16R-PTAAW	1899/2106KW	16*170*220	≤210	79.9	290
DD-S1900GF	1900	2100	E	6500*2700*3200	18600	S16R2-PTAAW-E	2068/2275KW	16*170*220	≤212	79.9	290



扬州市东电力设备有限公司 Yangzhou East Power Equipment Co.,Ltd

帕金斯系列 Perkins series



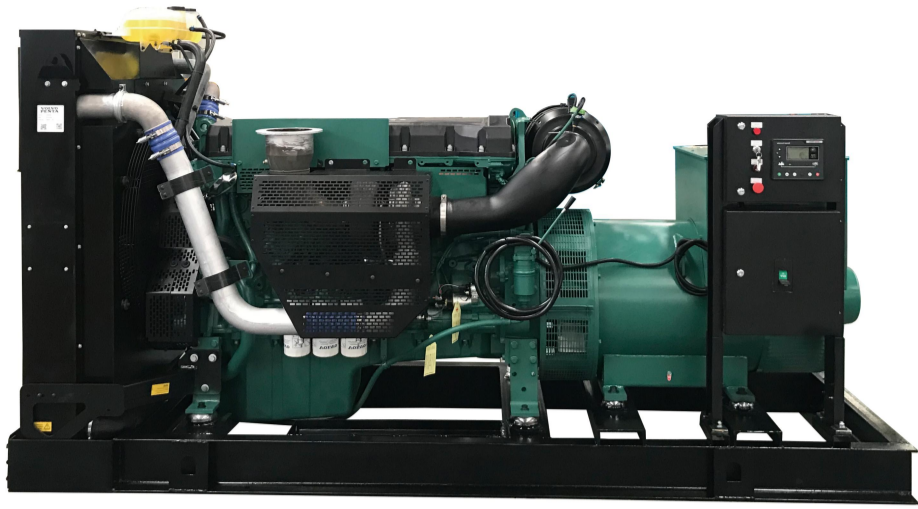
英国Perkins（帕金斯）发动机有限公司于1932年由英国企业家Frank.Perkins在英国Peterborough创建，为全球领先的发动机制造商之一，是4至2000KW（5至2800hp）功率非公路用柴油及天然气发动机市场翘楚。拥有近百年的悠久历史，生产超过 2000 万台发动机，客户能够从整个产品系列优良的工程传统、卓越的可靠性以及更低的噪音水平中获益。Perkins公司擅长为客户量身定做发动机，完全满足客户的特定需求，因而备受设备生产商信赖。

Perkins发动机有限公司是卡特彼勒的子公司，在巴西、中国、印度、日本、新加坡、英国和美国均设有工厂和办事处。

东电力生产的P系列帕金斯柴油发电机组采用进口技术，产地由美国卡特彼勒、英国劳斯莱斯、中国、印度生产的柴油发动机，此种发动机采用最新欧美技术及高强度耐磨材料，确保一流的品质，出厂前，经过先进的电脑进行测试，其技术及品质均达到欧美生产水平，帕金斯柴油发电机组特点是油耗低、性能稳定、维护方便、运行成本低、排放低。

Since the first Perkins Diesel engine was developed by the founder Frank Perkins, Perkins has always been focusing on quality engines to the customers around the world. 80 years later, Perkins has become the leading supplier of diesel and gas engine market. Perkins owns a complete range of product, power rate from 4 kW to 2000 kW (5 to 2800hp) for different variety customer requirements and able to meet different emission regulations of different regions and countries. The OEMs around the globe consider Perkins engines for Power supply as prior choice either within the territory of industrial, architecture, agriculture, material handling equipment or electric power market. The P-Series Perkins diesel generator set produced by EAST POWER adopts imported technology and is produced by caterpillar of the United States, Rolls Royce of the United Kingdom, China and IndiaThe diesel engine adopts the latest European and American technology and high-strength wear-resistant materials to ensure first-class quality. It is tested by advanced computers before leaving the factory. Its technology and quality have reached the European and American production level. Perkins diesel generator set is characterized by low fuel consumption, stable performance, convenient maintenance, low operation cost and low emission.

机组技术参数 GENERATOR SET TECHNICAL PARAMETER					发动机技术参数 ENGINE TECHNICAL PARAMETER						
机组型号 GenSet Model	主用功率 Prime Power	备用功率 Standby Power	调速方式 Speed Control Mode	外形尺寸 Dimension 长×宽×高 L*W*H MM	重量 Weight KG	发动机型号 Engine Model	发动机功率 Engine Power	缸数/缸径/行程 Cylinders/Bore/Stroke MM*MM	燃油消耗率 Fuel Consumption Rate g/kw.h	排量 Displacement L	润滑油容量 Lube Volume L
	KW	KVA				发动机功率 Engine Power	缸数/缸径/行程 Cylinders/Bore/Stroke MM*MM	燃油消耗率 Fuel Consumption Rate g/kw.h	排量 Displacement L	润滑油容量 Lube Volume L	
DD-P7GF	7	8	M	1150*500*750	360	403A-11G1	9.5KW	3*77*81	≤252	1.1	4.9
DD-P10GF	10	11	M	1230*500*780	400	403A-15G1	13.5KW	3*77*81	≤248	1.1	4.9
DD-P12GF	12	13	M	1280*500*800	400	403A-15G2	15.1KW	3*77*81	≤248	1.1	4.9
DD-P16GF	16	18	M	1500*600*900	500	404A-22G1	20.6KW	4*84*100	≤227	2.2	10.6
DD-P7GF	7	8	M	1150*500*750	380	403D-11G	9.5KW	3*77*81	≤229	1.1	4.9
DD-P10GF	10	11	M	1230*500*780	420	403D-15G	13.5KW	3*84*90	≤214	1.5	6
DD-P16GF	16	18	M	1500*600*900	500	404D-22G	20.6KW	4*84*100	≤213	2.2	10.6
DD-P24GF	24	26	M	1500*600*1000	680	1103A-33G	31KW	3*105*127	≤212	3.3	7.9
DD-P36GF	36	40	M	1600*680*1050	700	1103A-33T1	46.5KW	3*105*127	≤212	3.3	7.9
DD-P48GF	48	52	M	1700*680*1100	800	1103A-33T2	60.5KW	3*105*127	≤212	3.3	7.9
DD-P48GF	48	52	E	1900*700*1200	1000	1104D-44T1	64KW	4*105*127	≤206	4.4	8
DD-P52GF	52	57	M	1900*760*1200	1000	1104A-44T1	65.5KW	4*105*127	≤228	4.4	8
DD-P64GF	64	70	M	1900*760*1200	1000	1104A-44T2	80.5KW	4*105*127	≤212	4.4	8
DD-P64GF	64	70	E	1950*800*1200	1000	1104D-44T1	82.5KW	4*105*127	≤202	4.4	8
DD-P64GF	64	70	ECM	1950*800*1200	1100	1104D-E44TAG1	85.7KW	4*105*127	≤199	4.4	8
DD-P80GF	80	88	E	2000*800*1200	1200	1104D-44TAG2	103KW	4*105*127	≤208	4.4	8
DD-P80GF	80	88	ECM	2000*800*1200	1200	1104D-E44TAG2	105.1KW	4*105*127	≤199	4.4	8
DD-P108GF	108	118	M	2350*850*1350	1300	1106A-70T1	139.9KW	6*105*135	≤215	7	16.5
DD-P112GF	112	120	ECM	2400*850*1350	1300	1106D-E70TAG2	171.2KW	6*105*135	≤211	7	16.5
DD-P120GF	120	132	M	2500*850*1450	1500	1106A-70TAG2	153.5KW	6*105*135	≤205	7	16.5
DD-P120GF	120	132	ECM	2500*850*1450	1500	1106D-E70TAG3	183.8KW	6*105*135	≤207	7	16.5
DD-P144GF	144	160	M	2550*960*1500	1600	1106A-70TAG3	185.5KW	6*105*135	≤197	7	16.5
DD-P144GF	144	160	ECM	2550*960*1500	1600	1106D-E70TAG4	209.4KW	6*105*135	≤195	7	16.5
DD-P160GF	160	180	E	2600*1000*1550	1700	1106A-70TAG4	202KW	6*105*135	≤193	7	16.5
DD-P160GF	160	176	ECM	2800*1100*1800	1900	1206A-E70TAG1	196KW	6*105*135	≤199	7	17
DD-P180GF	180	200	ECM	2900*1100*1800	2000	1206A-E70TAG2	223KW	6*105*135	≤198	7	17
DD-P200GF	200	220	ECM	2900*1100*1800	2000	1206A-E70TAG3	245KW	6*105*135	≤198	7	17
DD-P160GF	160	176	ECM	2800*1100*1800	1900	1206D-E70TAG1	196KW	6*105*135	≤197	7	17
DD-P180GF	180	200	ECM	2900*1100*1800	2000	1206D-E70TAG2	223KW	6*105*135	≤198	7	17
DD-P200GF	200	220	ECM	2900*1100*1800	20						



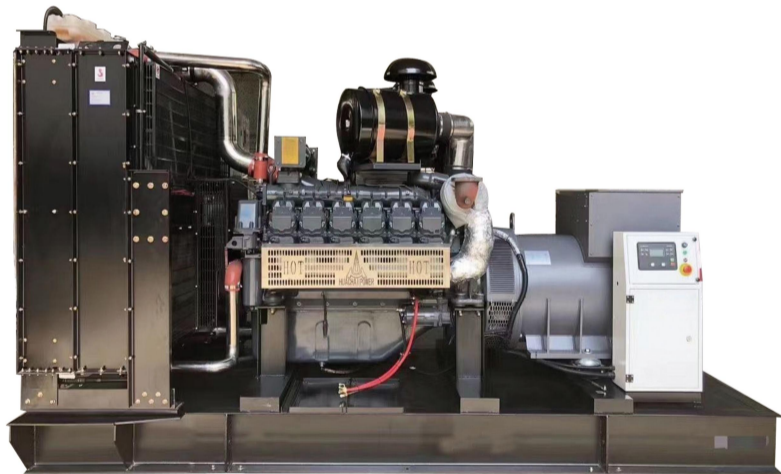
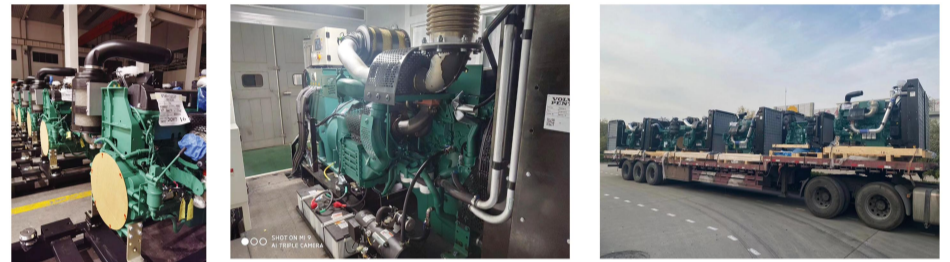
沃尔沃柴油发电机组是选用的是久负盛名的瑞典沃尔沃集团生产的柴油发电机组配以发电机等部件组装而成。沃尔沃公司是瑞典最大的工业企业，有120多年的历史，是世界上历史最悠久的发动机制造厂商之一，至今为止其引擎产量已达100万台以上，并广泛应用于汽车、工程机械、轮船等动力部分，它更是发电机组的理想动力。同时VOLVOPENTA公司是世界上唯一一家专注于直列四缸柴油机和六缸柴油机的生产商，它在此技术上傲视群雄。

扬州市东电力设备有限公司生产VOLVO柴油发电机组，它具有体积小、耗油少、精度高、寿命长、适应各类恶劣环境等特点，公司已为国内外用户提供了数百台V系列高性能发电机组。

The Volvo diesels are made from diesel-generator units produced by the prestigious Swedish Volvo group, which are assembled with generators and other components. Volvo company is Sweden's largest industrial enterprises, has 120 years of history, is one of the world's oldest engine manufacturer, so far its engine production has reached more than 1 million units, and is widely applied in automobile, engineering machinery, ships, such as power section, it is more ideal power generator set. At the same time VOLVOPENTA is the only producer in the world to focus on four cylinder diesel engines and six cylinder diesel engines.

Yangzhou East Power Equipment co., Ltd. produces VOLVO diesel generator set have been for many years, it has small size, less fuel consumption, high precision, long service life etc., the company has provided hundreds of users at home and abroad high-performance generator set.

机组技术参数 GENERATOR SET TECHNICAL PARAMETER						发动机技术参数 ENGINE TECHNICAL PARAMETER					
机组型号 Genset Model	主用功率 Prime Power KW	备用功率 Standby Power KW	调速方式 Speed Control Mode	外形尺寸 Dimension		发动机型号 Engine Model	发动机功率 Engine Power KW	缸数缸径行程 Cylinder/Bore/Stroke MM*MM	燃油消耗率 Fuel Consumption Rate g/kw.h	排量 Displacement L	润滑油容量 Lube Volume L
				长×宽×高 L*W*H	重量 Weight KG						
DD-V680F	68	75	ECM	2000*750*1400	1000	TAD530GE	75/83KW	4*108*130	≤214	1.1	4.9
DD-V800F	80	88	ECM	2200*750*1500	1100	TAD531GE	88/97KW	4*108*130	≤213	1.1	4.9
DD-V1000F	100	110	ECM	2250*800*1550	1300	TAD532GE	113/125KW	4*108*130	≤212	1.1	4.9
DD-V1200F	120	132	ECM	2400*850*1600	1400	TAD730GE	113/125KW	6*108*130	≤212	2.2	10.6
DD-V1200G	120	132	ECM	2400*850*1600	1500	TAD731GE	134/148KW	6*108*130	≤212	1.1	4.9
DD-V1440F	144	160	ECM	2500*950*1600	1800	TAD732GE	159/176KW	6*108*130	≤206	1.5	6
DD-V1600F	160	176	ECM	2600*1000*1600	2000	TAD733GE	176/194KW	6*108*130	≤228	2.2	10.6
DD-V2000F	200	220	ECM	2700*1050*1700	2100	TAD734GE	219/241KW	6*108*130	≤212	3.3	7.9
DD-V2500F	250	280	ECM	2900*1100*1700	2500	TAD1341GE	275/302KW	6*131*158	≤202	3.3	7.9
DD-V2800F	280	300	ECM	2900*1100*1700	2700	TAD1342GE	303/333KW	6*131*158	≤199	3.3	7.9
DD-V3000F	300	330	ECM	3000*1150*1750	2800	TAD1343GE	325/356KW	6*131*158	≤208	4.4	8
DD-V3200F	320	350	ECM	3100*1150*1800	2900	TAD1344GE	354/389KW	6*131*158	≤199	4.4	8
DD-V3600F	360	400	ECM	3100*1160*1900	3000	TAD1345GE	388/431KW	6*131*158	≤215	4.4	8
DD-V3600G	360	400	ECM	3300*1160*2000	3400	TAD1640GE	392/431KW	6*144*165	≤211	4.4	8
DD-V4000F	400	440	ECM	3300*1160*2000	3600	TAD1641GE	430/473KW	6*144*165	≤205	4.4	8
DD-V4500F	450	500	ECM	3400*1160*2000	3800	TAD1642GE	503/554KW	6*144*165	≤202	4.4	8
DD-V5000F	500	550	ECM	3400*1160*2000	4200	TAD1643GE	536/596KW	6*144*165	≤197	4.4	8
DD-V680G	68	75	ECM	2000*750*1400	1000	TAD550GE	76/84KW	4*108*130	≤195	7	16.5
DD-V800G	80	88	ECM	2200*750*1500	1100	TAD551GE	89/98KW	4*108*130	≤193	7	16.5
DD-V1000G	100	110	ECM	2400*850*1600	1400	TAD750GE	113/127KW	6*108*130	≤199	7	16.5
DD-V1200G	120	132	ECM	2400*850*1600	1500	TAD751GE	132/143KW	6*108*130	≤198	7	16.5
DD-V1440G	144	160	ECM	2500*950*1600	1800	TAD752GE	158/174KW	6*108*130	≤198	7	16.5
DD-V1600G	160	180	ECM	2600*1000*1600	2000	TAD753GE	175/194KW	6*108*130	≤197	7	16.5
DD-V2000G	200	220	ECM	2700*1050*1700	2100	TAD754GE	219/242KW	6*108*130	≤198	7	16.5
DD-V2500G	250	280	ECM	2900*1100*1700	2500	TAD1351GE	279/306KW	6*131*158	≤193	7	17
DD-V2800G	280	300	ECM	2900*1100*1700	2700	TAD1352GE	314/345KW	6*131*158	≤195	7	17
DD-V3000G	300	330	ECM	3000*1150*1750	2900	TAD1354GE	328/361KW	6*131*158	≤197	7	17
DD-V3200G	320	350	ECM	3100*1150*1800	3000	TAD1355GE	355/390KW	6*131*158	≤198	7	17
DD-V3600G	360	400	ECM	3300*1160*2000	3400	TAD1650GE	393/433KW	6*144*165	≤230	7	17
DD-V4000G	400	440	ECM	3300*1160*2000	3600	TAD1651GE	430/473KW	6*144*165	≤214	7	17
DD-V4500G	450	500	ECM	3400*1160*2000	3800	TAD1652GE	505/557KW	6*144*165	≤210	9	41
DD-V5000G	500	550	ECM	3400*1160*2000	4200	TAD1653GE	547/604KW	6*144*165	≤224	12.5	40



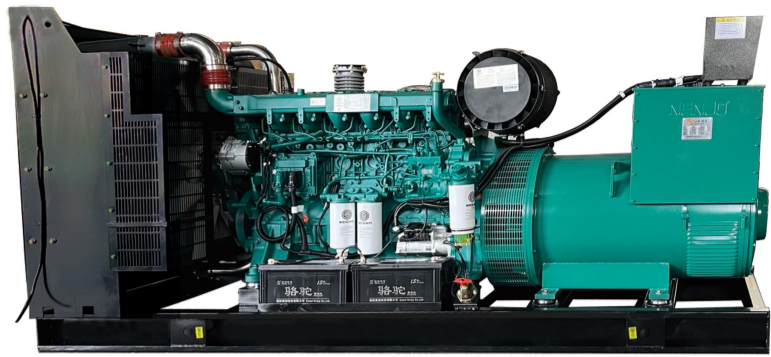
1864年奥托先生和蓝根先生合伙创建了世界上第一家发动机生产厂，也就是今天道依茨公司的前身。奥托先生发明的第一台发动机就是燃烧煤气的气体发动机，因此，道依茨公司在燃气发动机方面已经具有140多年的历史。最初由N. A. Otto & Cie. 于1864年创立于德国科隆的道依茨公司，是现今历史最悠久世界领先的发动机独立制造厂商。作为全系列发动机专家，道依茨提供功率范围从25KW到520KW的水冷和风冷发动机，可广泛应用于工程机械、发电机组、农用机械，商用车辆、铁路机车和船舶，以及军用车辆，并应用于各种专业配套用途领域。

道依茨公司在全球超过130个国家拥有9个分公司，9个销售办事处、16家服务中心以及超过800家的销售服务伙伴为客户提供支持。

DEUTZ is one of the world's leading manufacturers of drive systems for off-highway applications. Originally founded as N.A. Otto & Cie. in Cologne, Germany, in 1864, DEUTZ AG is now the world's oldest engine company. The DEUTZ Group employed around 4,750 people worldwide at the end of 2021. Its core competencies are the development, production, and distribution of drive solutions in the power range up to 620 kW for off-highway applications. The current portfolio extends from diesel and gas engines to hybrid, all-electric, and hydrogen drives. DEUTZ drives are used in a wide range of applications including construction equipment, agricultural machinery, material handling equipment such as forklift trucks and lifting platforms, commercial vehicles, rail vehicles, and boats used for private or commercial purposes. DEUTZ also offers a comprehensive range of digital and analog services through more than 800 sales and service partners in over 130 countries.

机组技术参数 GENERATOR SET TECHNICAL PARAMETER						发动机技术参数 ENGINE TECHNICAL PARAMETER					
机组型号 Genset Model	主用功率 Prime Power KW	备用功率 Standby Power KW	调速方式 Speed Control Mode	外形尺寸 Dimension		发动机型号 Engine Model	发动机功率 Engine Power KW	缸数缸径行程 Cylinder/Bore/Stroke MM*MM	燃油消耗率 Fuel Consumption Rate g/kw.h	排量 Displacement L	润滑油容量 Lube Volume L
				长×宽×高 L*W*H	重量 Weight KG						
DD-D160F	16	18	E	1500*600*900	450	BFM3G1	20/22KW	4*98*105	≤228	3.168	7.5
DD-D240F	24	26	E	1550*600*1000	500	BFM3G2	29/32KW	4*98*105	≤226	3.168	7.5
DD-D300F	30	33	E	1650*700*1050	580	BFM3T	40/44KW	4*98*105	≤218	3.168	7.5
DD-D400F	40	44	E	1700*730*1100	650	BFM3C	45/50KW	4*98*105	≤212	3.168	7.5
DD-D480F	48	52	E	1700*730*1100	850	BF4M2012	54/60KW	4*101*126	≤212	4.04	8.5
DD-D600F	60	66	E	1830*750*1150	900	BF4M2012CG1	71/75KW	4*101*126	≤217	4.04	8.5
DD-D700F	70	77	E	1900*800*1200	950	BF4M2012CG2	85/93KW	4*101*126	≤213	4.04	8.5
DD-D800F	80	88	E	1950*830*1200	1100	BF4M1013CG1	97/102KW	4*108*130	≤212	4.76	11
DD-D900F	90	100	E	2000*850*1250	1120	BF4M1013CG2	105/116KW	4*108*130	≤211	4.76	11
DD-D1000F	100	110	E	2050*850*1250	1150	BF4M1013FC	117/129KW	4*108*130	≤210	4.76	11
DD-D1280F	128	140	E	2350*850*1350	1450	BF6M1013CG1	146/153KW	6*108*130	≤209	7.15	31
DD-D1440F	144	160	E	2400*850*1450	1500	BF6M1013CG2	160/175KW	6*108*130	≤208	7.15	31
DD-D1500F	150	165	E	2400*850*1450	1500	BF6M1013CG2	166/183KW	6*108*130	≤208	7.15	31
DD-D1600F	160	180	E	2500*860*1450	1550	BF6M1013FCG3	183/201KW	6*108*130	≤212	7.15	31
DD-D2000F	200	220	ECM	2600*1020*1550	1900	TCDB 0	225/250KW	6*110*136	≤195	7.8	31
DD-D2600F	260	280	ECM	2900*1350*1800	2450	TCD12.1 G1	290/330KW	6*131*150	≤195	12.1	30
DD-D3000F	300	330	ECM	3000*1400*1850	2600	TCD12.1 G2	330/360KW	6*131*150	≤197	12.1	30
DD-D3600F	360	400	ECM	3100*1400*1850	2800	TCD13.0 G1	395/435KW	6*131*160	≤191	12.94	30
DD-D4000F	400	440	ECM	3150*1450*1950	2850	TCD13.0 G2	440/470KW	6*131*160	≤195	12.94	30
DD-D1800G	180	200	E	2400*1000*1700	1700	BF6M1015-LA GA	208/231KW	6*132*145	≤196	11.906	28
DD-D2000G	200	220	E	2500*1000*1700	1750	BF6M1015-LA G1A	228/250KW	6*132*145	≤195	11.906	28
DD-D2200G	220	240	E	2600*1050*1750	1850	BF6M1015-LA G2A	256/285KW	6*132*145	≤195	11.906	28
DD-D2500G	250	280	E	2600*1050*1750	1950	BF6M1015-LA G3A	282/314KW	6*132*145	≤195	11.906	28
DD-D2800G	280	300	E	2700*1050*1800	2050	BF6M1015-LA G4	310/345KW	6*132*145	≤195	11.906	28
DD-D3000G	300	330	E	2800*1050*1800	2100	BF6M1015CP-LA G	328/365KW	6*132*145	≤195	11.906	28
DD-D3500G	350	380	E	3000*1250*1900	2500	BF6M1015CP-LA G1A	388/418KW	8*132*145	≤196	15.874	38
DD-D3600G	360	400	E	3000*1300*1900	2550	BF6M1015CP-LA G2	403/440KW	8*132*145	≤196	15.874	38
DD-D3800G	380	420	E	3000*1300*1900	2550	BF6M1015CP-LA G1A	413/459KW	8*132*145	≤196	15.874	38
DD-D4000G	400	440	E	3000*1360*1950	2600	BF6M1015CP-LA G2	448/490KW	8*132*145	≤196	15.874	38
DD-D4100G	410	450	E	3000*1400*2000	2650	BF6M1015CP-LA G3	458/508KW	8*132*145	≤196	15.874	38
DD-D4300G	430	470	E	3050*1400*2000	2800	BF6M1015CP-LA G4	480/530KW	8*132*145	≤196	15.874	38
DD-D4500G	450	500	E	3050*1500*2100	2900	BF6M1015CP-LA G5	509/560KW	8*132*145	≤196	15.874	38
DD-D5500G	550	600	E	3600*1550*2150	4000	HCI2V132ZL-LA61A	600/670KW	12*132*145	≤197	23.812	48
DD-D6000G	600	660	E	3800*1650*2200	4500	HCI2V132ZL-LA62A	666/740KW	12*132*145	≤197	23.812	48





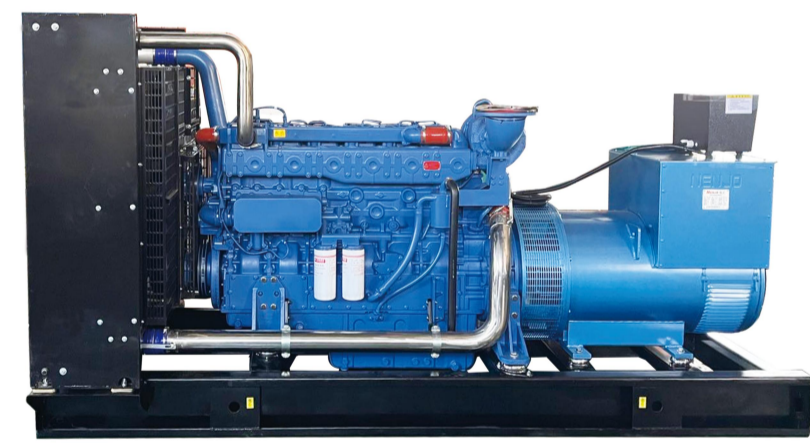
潍柴动力股份有限公司 (HK2338, SZ000338) 成立于2002年, 由潍柴控股集团有限公司作为主发起人、联合境内外投资者创建而成, 是中国内燃机行业第一家在香港H股上市的企业, 也是中国第一家由境外回归内地实现A股再上市的公司。公司资产总额1640亿元, 全球拥有员工4.2万人 (不含凯傲)。2016年, 企业实现销售收入931.8亿元, 利润总额46.4亿元, 名列2016年中国企业500强第79位。

扬州市东电力设备有限公司生产的柴油发电机组配套潍柴集团旗下发电动力的“锐动力”“潍柴动力”“博杜安”三大系列柴油机具有高原适应性强, 油品适应性强, 油耗低、寿命长等优点。

Weichai Power Co., Ltd. (HK2338 SZ000338) was founded in 2002, by Weichai holding group Co., Ltd. Was founded as the main sponsor, combined domestic and overseas investors, is the first in China's internal combustion engine industry in Hong Kong H shares listed company, is China's first overseas to return to the mainland by the realization of a-share listed companies. With a total assets of 164 billion yuan, the company has 42,000 employees worldwide. In 2016, the company realized sales revenue of 93.18 billion yuan, with a total profit of 4.46 billion yuan, ranking the 79th place among the top 500 Chinese enterprises in 2016.

Yangzhou East Power Equipment Co., Ltd produce the diesel generating sets supporting Weichai group of electric power "RUI POWER" "WEICHAI POWER" "BAUDOUIN" three series diesel engine has the plateau adaptability is strong, product high adaptability, low fuel consumption, long service life, etc.

机组技术参数 GENERATOR SET TECHNICAL PARAMETER						发动机技术参数 ENGINE TECHNICAL PARAMETER						
机组型号 GenSet Model	主用功率 Prime Power KW	备用功率 Standby Power KW	调速方式 Speed Control Mode	外形尺寸 Dimension		重量 Weight KG	发动机型号 Engine Model	发动机功率 Engine Power KW	缸数/缸径/行程 Cylinders/Bore/Stroke MM*MM	燃油消耗率 Fuel Consumption Rate g/kw.h	排量 Displacement L	润滑油容量 Lube Volume L
				长×宽×高 L×W×H MM	重量 Weight KG							
DD-W180GF	18	20	M/E	1520*600*1000	450	WP2_3025E200	23/25KW	4*98*115	≤225	2.3	8	
DD-W250GF	25	28	M/E	1520*600*1000	480	WP2_3033E200	30/33KW	4*98*115	≤225	2.3	8	
DD-W300GF	30	33	M/E	1560*620*1000	500	WP2_3040E200	36/40KW	4*98*115	≤225	2.3	8	
DD-W360GF	36	40	M/E	1560*620*1000	500	WP2_3048E200	44/48KW	4*98*115	≤225	2.3	8	
DD-W500GF	50	55	M/E	1900*720*1200	550	WP4_1066E200	60/66KW	4*105*118	≤216	4.087	13	
DD-W640GF	64	70	M/E	1900*720*1200	650	WP4_1080E200	72/80KW	4*105*118	≤216	4.087	13	
DD-W800GF	80	88	E	1900*720*1200	700	WP4_1D100E200	90/100KW	4*105*118	≤216	4.087	13	
DD-W1000GF	100	110	E	2400*850*1500	1400	WP60132E200	120/132KW	6*105*130	≤210	6.75	18	
DD-W1200GF	120	132	E	2400*850*1500	1600	WP60152E200	138/152KW	6*105*130	≤210	6.75	18	
DD-W1500GF	NA	150	E	2500*950*1500	1700	WP60167E200	—/170KW	6*105*130	≤210	6.75	18	
DD-W1600GF	160	176	E	2900*950*1550	1800	WP100200E200	182/200KW	6*126*130	≤210	9.726	24	
DD-W1800GF	180	200	E	2950*950*1550	2000	WP100238E200	216/238KW	6*126*130	≤210	9.726	24	
DD-W2000GF	200	220	E	2950*950*1550	2100	WP100264E200	240/264KW	6*126*130	≤210	9.726	24	
DD-W2800GF	NA	280	E	3000*950*1550	2400	WP100302E200	—/320KW	6*126*130	≤210	9.726	24	
DD-W3000GF	NA	300	E	3000*1000*1550	2500	WP100353E200	—/353KW	6*126*130	≤210	9.726	24	
DD-W3000GF	300	330	E	3000*1200*1620	2600	WP130385E200	350/385KW	6*127*165	≤209	12.54	36	
DD-W3500GF	NA	350	E	3000*1200*1620	2600	WP130405E200	—/405KW	6*127*165	≤212	12.54	36	
DD-W3500GF	350	400	EGM	3100*1250*1550	2600	WP130440E310	392/440KW	6*127*165	≤200	12.54	36	
DD-W4000GF	400	440	EGM	3200*1300*1550	2700	WP130490E310	450/490KW	6*127*165	≤200	12.54	36	
DD-W4500GF	450	500	E	3600*1500*1850	4300	6M330572E200	520/572KW	6*150*185	≤210	19.6	61	
DD-W5000GF	500	550	E	3600*1500*1850	4800	6M330633E200	575/633KW	6*150*185	≤210	19.6	61	
DD-W5000GF	550	600	E	3600*1500*1850	4900	6M330670E200	610/670KW	6*150*185	≤210	19.6	61	
DD-W640GF	640	700	E	4500*1800*2200	6000	12M260792E200	720/792KW	12*150*150	≤207	31.8	113	
DD-W720GF	720	800	E	4500*1800*2200	6100	12M260902E200	820/902KW	12*150*150	≤207	31.8	113	
DD-W800GF	800	880	E	4500*1800*2200	6200	12M260968E200	880/968KW	12*150*150	≤207	31.8	113	
DD-W900GF	900	1000	E	4800*2200*2400	7500	12M3301108E200	1007/1108KW	12*150*185	≤208	39.2	146	
DD-W1000GF	1000	1100	E	4900*2300*2500	7800	12M3301210E200	1100/1210KW	12*150*185	≤208	39.2	146	
DD-W1100GF	1100	1200	E	4900*2300*2500	8300	12M3301320E200	1200/1320KW	12*150*185	≤208	39.2	146	
DD-W1200GF	1200	1320	E	4900*2300*2500	8500	12M3301450E310	1350/1450KW	12*150*185	≤196	39.2	146	
DD-W1240GF	1240	1400	EGM	5300*2350*2600	9700	16M3301530E310	1390/1530KW	16*150*185	≤195	52.3	171	
DD-W1300GF	1300	1430	EGM	5450*2350*2600	10000	16M3301580E310	1430/1580KW	16*150*185	≤195	52.3	171	
DD-W1400GF	1400	1520	EGM	5450*2350*2600	10500	16M3301680E310	1530/1680KW	16*150*185	≤195	52.3	171	
DD-W1500GF	1500	1650	EGM	5450*2350*2600	10800	16M3301800E310	1680/1800KW	16*150*185	≤195	52.3	171	
DD-W1600GF	1600	1800	EGM	5500*2400*2700	11500	16M3301980E310	1800/1980KW	16*150*185	≤195	52.3	171	
DD-W1600GF	1600	1800	EGM	5800*2500*2800	13000	20M3302020E310	1850/2020KW	20*150*185	≤195	65.4	370	
DD-W1800GF	1800	2000	EGM	5800*2500*2800	13500	20M330210E310	2010/2210KW	20*150*185	≤195	65.4	370	
DD-W1800GF	1800	2000	EGM	5600*2400*2900	16500	12M550210E310	1985/2210KW	12*180*215	≤195	65.65	450	
DD-W2000GF	2000	2200	EGM	5600*2400*2900	17000	12M5502450E310	2200/2450KW	12*180*215	≤195	65.65	450	
DD-W2200GF	2200	2400	EGM	5700*2500*2900	18500	12M5502700E310	2420/2700KW	12*180*215	≤195	65.65	450	
DD-W2450GF	NA	2450	EGM	6500*2800*3300	20000	16M5502750E310	—/2750KW	16*180*215	≤195	87.5	480	
DD-W2400GF	2400	2650	EGM	6500*2800*3300	21000	16M5502900E310	2646/2900KW	16*180*215	≤195	87.5	480	
DD-W2600GF	2600	3000	EGM	6500*2800*3300	22000	16M5503300E310	2900/3300KW	16*180*215	≤195	87.5	480	
DD-W3000GF	3000	3300	EGM	6800*3000*3500	25000	16M5503600E310	3300/3600KW	16*180*215	≤195	87.5	480	



广西玉柴机器集团有限公司始建于1951年, 总部位于广西玉林市, 是一家以资本运营和资产管理为核心的投融资管理型公司、国有大型企业集团, 旗下拥有30多家全资、控股、参股子公司, 总资产429亿元, 员工约1.6万人。玉柴是中国产品类型齐全、完整的内燃机制造基地, 在广西、广东、江苏、安徽、山东、湖北、四川、重庆、辽宁等地均有产业基地布局, 公司年销售规模近500亿元, 发动机销量连续多年居行业前列。

玉柴跻身中国企业500强、中国制造业企业500强, 位列中国机械工业百强企业第10位、中国500最具价值品牌第99位, 品牌价值超人民币638.25亿元。获得“自治区主席质量奖”“中国质量奖提名奖”等荣誉, 是全国企业文化和建设示范基地和全国文明单位, 连续13年发布企业可持续发展报告。

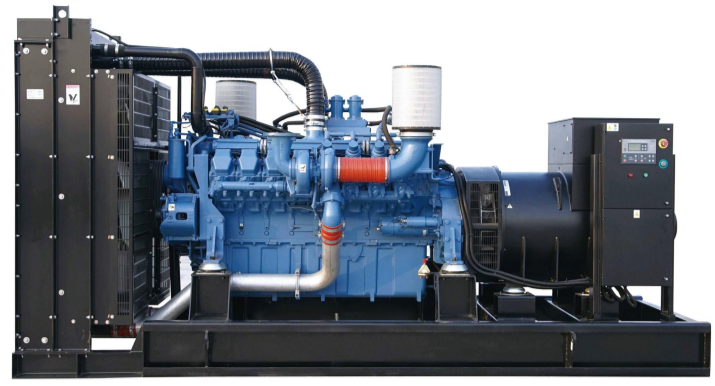
东电力生产的Y系列玉柴柴油发电机组具有功率范围广、低油耗、低排放、适配性强的特点, 玉柴发电机组以最低油耗≤192g/kw.h的优势已得到众多用户选择备用电源的首选品牌。

Founded in 1951, Guangxi Yuchai Machinery Group Co., Ltd. (Yuchai Group for short) is headquartered in Yulin, Guangxi Zhuang Autonomous Region. It is an investment and financing management company centered on capital operation and assets management. As a large-scale state-owned enterprise group, Yuchai Group has more than 30 wholly-owned, holding, and joint stock subsidiaries, with total assets of CNY 41.7 billion and approximately 16,000 employees. Yuchai Group is an internal combustion engine manufacturing base with a complete range of products in China. It has industrial base layout in Guangxi, Guangdong, Jiangsu, Anhui, Shandong, Hubei, Sichuan, Chongqing and Liaoning. Its annual sales volume exceeds CNY 40 billion and its sales volume of engines has ranked among the top in the industry for consecutive years.

The Y-Series Yuchai diesel generator set produced by EAST POWER has the characteristics of wide power range, low fuel consumption, low emission and strong adaptability. Yuchai generator set Low fuel consumption ≤ 192g/kw.H has been the preferred brand for many users to choose the standby power supply.

机组技术参数 GENERATOR SET TECHNICAL PARAMETER						发动机技术参数 ENGINE TECHNICAL PARAMETER						
机组型号 GenSet Model	主用功率 Prime Power KW	备用功率 Standby Power KW	调速方式 Speed Control Mode	外形尺寸 Dimension		重量 Weight KG	发动机型号 Engine Model	发动机功率 Engine Power KW	缸数/缸径/行程 Cylinders/Bore/Stroke MM*MM	燃油消耗率 Fuel Consumption Rate g/kw.h	排量 Displacement L	润滑油容量 Lube Volume L
				长×宽×高 L×W×H MM	重量 Weight KG							
DD-Y180GF	18	20	E	1600*600*1000	700	YCD4V120-35	23/25KW	4*98*115	≤200	4	10	
DD-Y280GF	28	30	E	1600*600*1000	750	YCD4V220-55	38/42KW	4*108*115	≤200	4	10	
DD-Y300GF	30	33	E	1850*700*1050	650	YCD4D60-D25	40/44KW	4*108*115	≤205	4.21	13	
DD-Y500GF	50	55	E	1850*700*1050	800	YCD4D90-D25	60/66KW	4*108*115	≤205	4.21	13	
DD-Y600GF	60	64	E	2000*750*1100	950	YCA1002-D25	70/77KW	4*108*132	≤210	4.84	17	
DD-Y800GF	80	88	E	2070*810*1160	1000	YCA1104L-D25	100/110KW	4*108*132	≤210	4.84	17	
DD-Y1000GF	100	110	E	2070*810*1160	1100	YCA1180L-D20	120/132KW	4*108*132	≤210	4.84	17	
DD-Y1000GF	100	110	E	2420*860*1320	1200	YCB180L-D20	120/132KW	6*108*125	≤200	6.87	20	
DD-Y1200GF	120	132	E	2420*860*1320	1300	YCB205L-D20	138/152KW	6*108*125	≤200	6.87	20	
DD-Y1500GF	150	160	E	2500*950*1350	1450	YCA245L-D21	165/181KW	6*108*132	≤200	7.25	22	
DD-Y2000GF	200	220	E	2850*1060*1570	2300	YCAM350L-D20	235/258.5KW	6*123*145	≤195	10.34	30	
DD-Y2500GF	250	280	E	2900*1060*1570	2500	YCAM420L-D20	281/309KW	6*123*145	≤195	10.34	30	
DD-Y3000GF	300	330	E	3100*1160*1570	2500	YCAM500L-D21	334/367KW	6*131*145	≤195	11.73	30	
DD-Y3600GF	360	400	E	3500*1260*1850	3600	YCB1600L-D22	401/441KW	6*145*165	≤195	16.35	52	
DD-Y4000GF	400	440	E	3500*1260*1850	3800	YCB1660L-D20	441/485KW	6*145*165	≤195	16.35	52	
DD-Y140GF	16	18	EGM	1600*600*1000	650	YCDV254FHZ-25	20/22KW	4*89*100	≤208	2.5	10	
DD-Y200GF	20	22	EGM	1600*600*1000	700	YCDV254FHZ-35	25/27.5KW	4*89*100	≤208	2.5	10	
DD-Y240GF	24	27	EGM	1600*650*1100	650	YCDV254FHZ-40	30/33KW	4*89*100	≤208	2.5	10	
DD-Y300GF	30	33	EGM	1600*650*1100	700	YCDV254FHZ-50	36.8/40.5KW	4*89*100	≤208	2.5	10	
DD-Y400GF	40	44	EGM	1800*640*1030	750	YCD4V33H6-75	50/55KW	4*89*100	≤208	4	13	
DD-Y400GF	40	44	EGM	1850*700*1050	800	YCD4080-D34	50/55KW	4*108*115	≤205	4.21	13	
DD-Y500GF	50	55	EGM	1850*700*1050	800	YCD490-D34	60/66KW	4*108*115	≤205	4.21	13	
DD-Y600GF	60	64	EGM	1850*700*1050	850	YCD4105-D34	70/77KW	4*108*115	≤205	4.21	13	
DD-Y800GF	80	88	EGM	1900*700*1050	900	YCD4140-D31	100/110KW	4*108*115	≤205	4.21	13	
DD-Y800GF	90	100	EGM	1900*700*1050	980	YCD4155-D31	103/113KW	4*108*115	≤205	4.21	13	
DD-Y800GF	80	88	EGM	2070*810*1160	1000	YCA4140-D30	95/105KW	4*108*132	≤210	4.84	17	
DD-Y800GF	90	100	EGM	2070*810*1160	1000	YCA4155-D30	103/113KW	4*108*132	≤210	4.84	17	
DD-Y900GF	90	100	EGM	2070*810*1160	1050	YCA4165-D30	110/121KW	4*108*132	≤210	4.84	17	
DD-Y1100GF	110	120	EGM	2070*810*1160	1100	YCA4190-D30	125/138KW	4*108*132	≤210	4.84	17	
DD-Y1200GF	120	132	EGM	2500*950*1600	1400	YCD6023H8-210	140/154KW	6*108*135	≤195	7.42	22	
DD-Y1600GF	160	180	EGM	2600*1000*1600	1600	YCD6033H6-260	190/209KW	6*108*135	≤195	7.42	22	
DD-Y1200GF	120	132	EGM	2450*950*1350	1400	YCA6205-D30	138/152KW	6*108*132	≤200	7.25	22	

Table with 13 columns: Generator set technical parameters (Prime Power, Standby Power, Speed Control, Dimensions, Weight) and Engine technical parameters (Engine Model, Power, Cylinders/Bore/Stroke, Fuel Consumption, Displacement, Lube Volume).



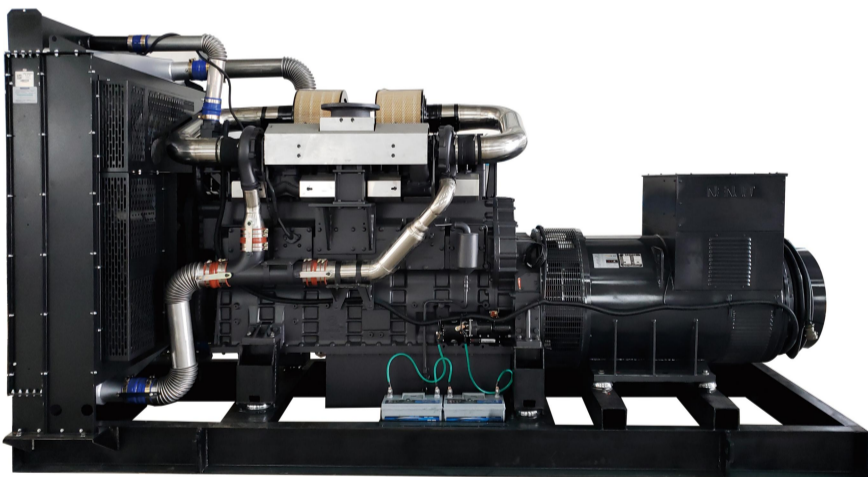
用于发电机组的MTU发动机，可靠性高，性能久经考验，其制造历史超过100年。此发动机具有尺寸紧凑，易于与发电机组，功率范围覆盖249千瓦到3490千瓦，是应急、电站发电及峰发电机组(常用/备用：50Hz/60Hz)的理想之选。

The MTU engine used for generator sets has high reliability and good performance. Its manufacturing history is over 100 years. The engine is compact and easy to follow. The generator assembly, with a power range of 249 kw to 3490 kw, is an emergency. The ideal choice for power station generator and peak power generator unit (commonly/standby: 50Hz/60Hz).

Yangzhou East Power Equipment Co., Ltd produce the MTU series diesel generator set. They serves a lot of troops and data centers.



Table with 13 columns: Generator set technical parameters (Prime Power, Standby Power, Speed Control, Dimensions, Weight) and Engine technical parameters (Engine Model, Power, Cylinders/Bore/Stroke, Fuel Consumption, Displacement, Lube Volume).



上海新动力汽车科技股份有限公司(曾用名:上海柴油机股份有限公司、上海柴油机厂,上海吴淞机器厂等),始建于1947年,现隶属于上汽集团,1993年改制为在上交所发行A、B股的国有控股公司。

2021年,公司通过实施重大资产重组,实现“重型卡车+柴油发动机”两大产业板块一体化发展的新格局。重型卡车业务将以全资控股的上汽红岩汽车有限公司为平台,积极布局智能重卡及新能源重卡,打造成为商用车重卡领域的头部企业,并通过新能源、智能驾驶、智能网联等技术领域的创新,打造智能重卡、新能源重卡的领导地位;柴油发动机业务将延续国内领先的全系列、多领域独立供应商的定位,持续扩充产品型谱,拓展新的细分市场,进一步提升产品在新能源化与智能网联化方面的差异化竞争优势,为国内外商用车、工程机械、农机、船舶和发电机组客户提供技术领先的产品。公司拥有国家认证企业技术中心和博士后工作站,拥有乘用车标准的质量管理体系和先进的自动化、数字化生产线,大力推行智能工厂建设。

扬州市东电力设备有限公司生产的上柴股份系列发电机组具有优良的动力性、经济性、可靠性备受用户青睐。

Shanghai New Power Automotive Technology Co., Ltd. (previously known as Shanghai Diesel Engine Co., Ltd., Shanghai Diesel Engine Factory, Shanghai Wusong Machine Factory etc.), was founded in 1947 and is now affiliated with SAIC Motor Corporation Limited (SAIC Motor). In 1993, it was restructured into a state-owned holding company that issues A and B shares on the Shanghai Stock Exchange.

We possess a nationally certified enterprise technology center and a postdoctoral workstation, as well as a quality management system aligned to the standard of passenger cars and advanced automated and digital production lines. In addition, we step up efforts to promote the construction of smart factories.

Yangzhou East Power Equipment Co., Ltd produce the SDEC series diesel generator set. It has a good power, economy and reliability make users feel best.

Table with 13 columns: Generator set technical parameters (Prime Power, Standby Power, Speed Control, Dimensions, Weight) and Engine technical parameters (Engine Model, Power, Cylinders/Bore/Stroke, Fuel Consumption, Displacement, Lube Volume).

机组技术参数 GENERATOR SET TECHNICAL PARAMETER					发动机技术参数 ENGINE TECHNICAL PARAMETER						
机组型号 Generator Model	主用功率 Prime Power KW	备用功率 Standby Power KW	调速方式 Speed Control Mode	外形尺寸 Dimension	重量 Weight KG	发动机型号 Engine Model	发动机功率 Engine Power KW	缸数*缸径*行程 Cylinders*Bore*Stroke	燃油消耗率 Fuel Consumption Rate g/kw.h	排量 Displacement L	润滑油容量 Lube Volume L
				长×宽×高 L*W*H MM							
DD-S8GF	8	9	ECM	1250*500*750	280	3Z1.1-G42	10/11KW	3*78*78.4	≤235	1.1	4
DD-S40GF	40	44	ECM	1850*720*1200	730	4HTAA4.3-G31	51/56KW	4*105*124	≤192	4.3	13
DD-S50GF	50	55	ECM	1850*720*1250	750	4HTAA4.3-G32	62/68KW	4*105*124	≤192	4.3	13
DD-S68GF	68	75	ECM	1900*720*1250	850	4HTAA4.3-G33	78/86KW	4*105*124	≤192	4.3	13
DD-S80GF	80	88	ECM	1900*800*1250	900	4HTAA4.3-G34	95/105KW	4*105*124	≤192	4.3	13
DD-S90GF	90	100	ECM	2000*820*1350	1000	4HTAA4.3-G35	106/117KW	4*105*124	≤192	4.3	13
DD-S100GF	100	110	ECM	2100*850*1450	1100	4HTAA4.3-G36	125/140KW	4*105*124	≤192	4.3	13
DD-S100GF	100	110	ECM	2400*950*1500	1350	6HTAA6.5-G31	128/141KW	6*105*124	≤192	6.5	15
DD-S120GF	120	132	ECM	2400*950*1500	1450	6HTAA6.5-G32	140/155KW	6*105*124	≤192	6.5	15
DD-S128GF	128	140	ECM	2600*1000*1600	1500	6HTAA6.5-G35	155/170KW	6*105*124	≤192	6.5	15
DD-S150GF	150	160	ECM	2600*1000*1600	1550	6HTAA6.5-G33	168/185KW	6*105*124	≤192	6.5	15
DD-S160GF	160	180	ECM	2600*1000*1600	1600	6HTAA6.5-G34	186/205KW	6*114*144	≤192	6.5	15
DD-S160GF	160	180	ECM	2700*1000*1600	1800	6DTAA8.9-G31	185/204KW	6*114*144	≤192	8.9	18
DD-S180GF	180	200	ECM	2750*1000*1600	2000	6DTAA8.9-G32	208/228KW	6*114*144	≤192	8.9	18
DD-S200GF	200	220	ECM	2800*1000*1600	2300	6DTAA8.9-G33	230/253KW	6*114*144	≤192	8.9	23
DD-S220GF	220	240	ECM	2850*1050*1650	2400	6DTAA8.9-G34	255/280KW	6*114*144	≤192	8.9	23
DD-S250GF	250	270	ECM	3000*1030*1700	2480	6ETA11.8-G32	280/308KW	6*128*153	≤190	11.8	33
DD-S260GF	260	280	ECM	3000*1030*1700	2500	6ETA11.8-G33	307/338KW	6*128*153	≤190	11.8	33
DD-S300GF	300	330	ECM	3100*1050*1750	2600	6ETA11.8-G31	340/380KW	6*128*153	≤190	11.8	33
DD-S320GF	320	350	ECM	3200*1100*1600	2650	6ETA12.8-G32	360/400KW	6*130*161	≤190	12.8	36
DD-S350GF	350	380	ECM	3300*1200*1700	2800	6ETA12.8-G31	401/441KW	6*130*161	≤190	12.8	36
DD-S400GF	400	440	ECM	3400*1250*1800	2900	6ETA12.8-G310	450/495KW	6*130*161	≤190	12.8	36
DD-S400GF	400	440	ECM	3550*1550*2200	5000	6KTA25-G36	460/506KW	6*170*185	≤192	25.18	60
DD-S450GF	450	500	ECM	3550*1550*2200	5200	6KTA25-G35	520/570KW	6*170*185	≤192	25.18	60
DD-S500GF	500	550	ECM	3650*1550*2200	5400	6KTA25-G34	572/629KW	6*170*185	≤192	25.18	60
DD-S550GF	550	600	ECM	3650*1550*2200	5500	6KTA25-G33	622/684KW	6*170*185	≤192	25.18	60
DD-S600GF	600	660	ECM	3900*1700*2300	6200	6KTA25-G32	685/754KW	6*170*185	≤192	25.18	60
DD-S640GF	640	700	ECM	3900*1700*2300	6300	6KTA25-G31	728/800KW	6*170*185	≤192	25.18	60
DD-S400GF	400	440	ECM	3550*1550*2200	5100	6KTA25-G311	460/506KW	6*170*185	≤192	25.18	60
DD-S450GF	450	500	ECM	3550*1550*2200	5300	6KTA25-G310	520/572KW	6*170*185	≤192	25.18	60
DD-S500GF	500	550	ECM	3650*1550*2200	5500	6KTA25-G39	572/629KW	6*170*185	≤192	25.18	60
DD-S550GF	550	600	ECM	3650*1550*2200	5600	6KTA25-G38	622/684KW	6*170*185	≤192	25.18	60
DD-S400GF	400	440	ECM	3500*1430*2000	4400	12GTA27-G34	459/505KW	12*135*155	≤195	26.6	45
DD-S450GF	450	500	ECM	3500*1450*2000	4500	12GTA27-G33	505/555KW	12*135*155	≤195	26.6	45
DD-S500GF	500	550	ECM	3500*1450*2000	4500	12GTA27-G32	565/622KW	12*135*155	≤195	26.6	45
DD-S550GF	550	600	ECM	3600*1500*2200	4750	12GTA27-G31	622/684KW	12*135*155	≤195	26.6	45
DD-S720GF	720	800	ECM	4350*1650*2550	7000	6HTAA35-G32	818/900KW	6*186*215	≤195	35.1	90
DD-S800GF	800	880	ECM	4350*1650*2550	7200	6HTAA35-G31	882/970KW	6*186*215	≤195	35.1	90
DD-S900GF	900	1000	ECM	4350*1650*2550	7500	6HTAA35-G310	1018/1120KW	6*186*215	≤195	35.1	90
DD-S1000GF	1000	1100	ECM	4500*1700*2600	8000	6HTAA35-G311	1118/1230KW	6*186*215	≤195	35.1	90



东电力系列无刷交流发电机是我公司引进国外先进技术，自行研发生产的新一代产品，本产品具有体积小、重量轻、操作方便、易维护的特点。东电力系列发电机能适应各种用户的要求，用户可以在不同功率，单相或三相，二级、四级或六级，110V-10500V电压，单支点或双支点等不同规格中选择适合的发电机，还可根据不同的发动机选择适合的过渡接套和联轴器。

EAST POWER series brushless AC generators are a new generation of products developed and manufactured by our company itself through introduction of foreign advanced technologies, which are characteristic of small volume, light weight, easy operation and simple maintenance. EAST POWER series generators are designed to meet multiple requirements from various customers who may choose a most appropriate generator from a great variety of such models and specifications as single phase or three phase, two poles, four poles or six poles, 110V-10500V voltage and single bearing or double bearing or may choose a most appropriate reduction sleeve or coupling according to different engines.

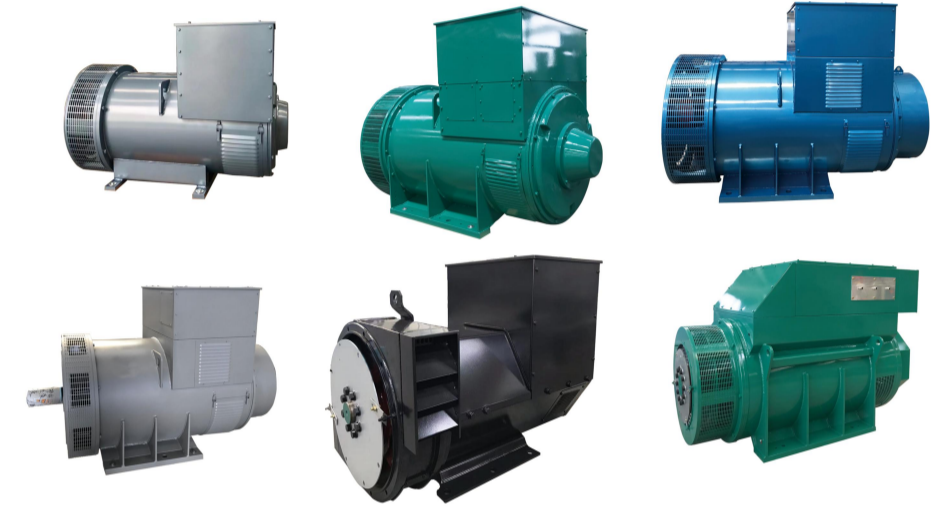
- 常用规格基本参数
 - 防滴漏结构(IP23防护等级)
 - H级绝缘
 - 额定电压400V
 - 三相四线制
 - 稳态电压调整率≤±1%
 - 瞬态电压调整率-15%~+20%
 - 电压波形畸变率THD≤3%
 - 电话谐波系数THF≤2%
 - 电话影响系数TIF≤50
- 使用环境

在下列环境下，发电机能够额定运行。

 - 海拔不超过1000米。
 - 环境温度-15°C-40°C。
 - 相对湿度不超过90%。
- 产品特点
 - 可靠的自动电压调节励磁系统和任选的永磁发电机系统，在各种情况下可提供恒定励磁。
 - 很容易与电网或其它发电机并联。
 - 经过动平衡的转子，带有密封的滚珠轴承，具有单轴承和双轴承两种结构。
 - 安装简单，维护保养方便；具有极易操作的接线柱、旋转整流器和联轴器螺栓。
 - 多规格的过渡接套和单承盘片式联轴器。
 - 符合所有主要的陆用标准。
- General specifications of main performance index
 - Drip-leak-proof structure: (IP23 protection class)
 - Insulation class H
 - Rated voltage 400V
 - Three phase four wires
 - Adjusting rate of stable voltages ≤ ±1%
 - Transient state voltage -15%~+20%
 - Wave aberration rate of voltage THD ≤ 3%
 - Telephone harmony wave factor THF ≤ 2%
 - Telephone influence factor TIF ≤ 50
- Environment conditions

Under the following environment, the alternator could run continuously:

 - Altitude: not exceed 1000m
 - Cooling air temperature: 25-313K (-15°C-40°C)
 - Relative air humidity: not exceed 90%
- Features
 - Reliable automatic voltage control exciting system; providing nvariable excitation on all occasions.
 - Easy to be connected with power network or other generators
 - Balance rotor with single or two sealed ball bearings
 - Convenient installation and easy maintenance, easy access to terminal rotating rectifier and coupling bolts.
 - Wide range of flange adaptor and single bearing coupling disc.
 - Meet all the main landing standards



静音型电站 7KW-2000KW
Silent/Container Type Generator

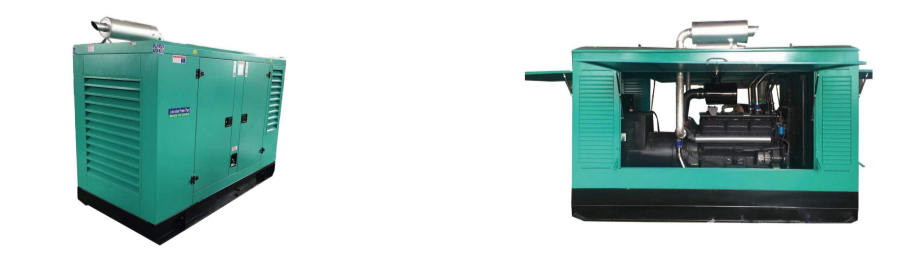
本公司低噪音系列发电机组，经过科学设计，采用声学、气流学领域的先进技术，将噪音降至60分贝~75分贝之间(距机组7米处均测)。适用于对噪声要求严格的场地：医院、住宅区、办公楼等。低噪音机组可分为：低噪音箱体式、低噪音移动式、机房降噪三种类型。

The low-noise series generator set produced in this company is scientifically designed, in which such advanced technologies in the fields of acoustics and airflow science are adopted, thus causing its noise reduced to 60-75dB (an average value measured at 7m away from the set). It is applicable to the places, where there are high requirements for the noise, such as hospitals, residential quarters and office buildings. There are three types in the low noise generator sets: a low-noise box type generator set, a low-noise mobile type generator set and a machine room denoise type generator set.



防雨型电站 58KW-2000KW
Rainproof Type Generator

适用于露天、野外固定场所施工，可提高机组的防雨、防雪、防风沙等能力。具有方便、快捷、易操作等特点。“NENJO” rain-proof power station is applicable to the construction in fixed places in the open fields, which is helpful in the increase of capability against the rain, snow, wind and sand and is characteristic of convenience, promptness and easy operation.



移动型电站
Mobile Type Generator

移动电站具有多种结构和功能，具有以下几个品种：三轮、四轮拖车移动电站、汽车移动电站、噪音移动电站等。本公司生产的移动电站是在参照国内外先进技术的基础上自行研制、开发生产，具有良好的操控性和安全性。具体有以下特点：

- 牵引：采用活动式挂钩，转向灵活，运行方便。
- 制动：具有可靠的气刹接口(选配件)和手刹系统，确保行车中的安全。
- 支撑：为保证电站操作时的稳定性，配有4R机械或液压支撑装置(选配件)。
- 门窗：前后有通风窗，两侧、后部均设有可拉升的大门。
- 车箱：车箱可设通道，供操作人员四周查看，便于操作和维护。
- 外观：油漆采用高分子聚酯油漆或者喷塑工艺，颜色可由用户自定，排气管采用上排气或下排气，确保美观。箱体外部装饰可根据用户要求制作。
- 消防：随车配有消防灭火器两只(选配件)。

There are various structures and functions in a mobile power station, namely, a 3-wheel or 4-wheel trailer mobile power station, a truck-mounted mobile power station and a low noise mobile power station. The mobile power stations produced in this company are developed and manufactured by itself with reference to the advanced technology both at home and abroad, which has excellent operability, controllability and safety. Its features are described below:

- Traction: A movable latch hook, flexible in rotation and convenient in operation.
- Braking: Provided with a reliable air brake interface (optional) and a hand-operated brake system, ensured in traveling safety.
- Support: To ensure the stable operation of the power station, a 4R mechanical or a hydraulic supporting device is provided (optional).
- Door and window: Ventilation windows are installed in the front and rear, and uplifted doors are provided at both the sides and in the rear.
- Carriage: A passage is provided in the carriage so as to be convenient for the operator to look around and conduct operation and maintenance.
- Appearance: High molecular polyester paint or powder coating is adopted with its color being decided by customers; upper or lower exhaust pipe is used to ensure beautiful appearance; the outside of the carriage is decorated as required by customers.
- Fire-fighting: Two fire extinguishers are provided (optional).



基本型控制系统

Manual Control System

控制箱上有电流表、电压表、频率表、油压表、水温表、指示灯等。根据需要可选加四保护功能。

The manual type control system is provided with a current meter, a voltmeter, a frequency meter, an oil pressure gauge, a water thermometer and indicator lights on the control cabinet and 4 additional protection functions are to be provided as required by customers



自启动型控制系统

Automatic start type control system

配备众智或者深海带液晶显示的控制模块。当市电停电时(或其他机组启动信号),经过延时确认(0~30S可调),机组自动启动(1~8次可调)。同时具有基本的保护功能,数字或仪表显示电压、电流、频率、功率、电压、转速等参数。

Automatic start control system is Provided With Smartgen or Deepsea Brand LCD Module. When there is an interruption in the commercial power supply (or there is a start signal in other generator sets), this generator set will, subject to time delay acknowledgement (0-30S adjustable), be automatically started (1-8 times adjustable). In addition, it is provided with a basic protection function and digital or meter indication of voltage, current, frequency and rotation speed parameters.



全自动三遥(遥控、遥测、遥讯)型控制系统

Fully automatic and 3-remote (remote control, remote measurement and remote communication) control system

具有自动型的全部功能,并具有计算机通讯接口,可与上位机通讯实现无人值守,根据用户的要求,可采用RS232直接连接,也可采用RS232转换为RS485远距离通讯,或者采用调制解调器MODEM电话网无距离限制通讯。同时可具有以下遥信功能:工作状态(运行/停机)、工作方式(自动/手动)、主备用机组过压,过流、频率/转速高、水温高(水冷)、润滑油温度高、低油压、启动失败、充电器故障等。

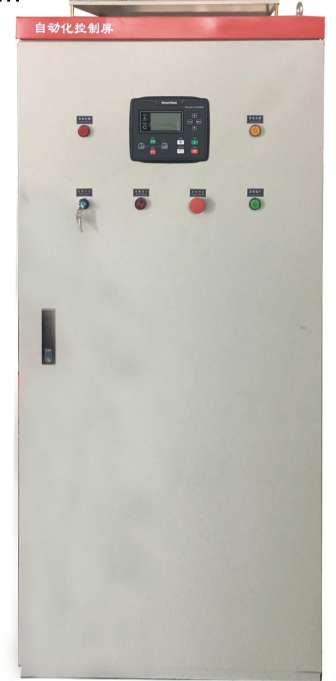
Besides all the functions of an automatic control system, the fully automatic and 3-remote control system is provided with a computer communication interface, in which the unattended communication with the upper computer can be realized. According to the requirement of customers, a RS232 can be adopted to connect directly, or a RS232 to be switched over to a RS485 for a long distance communication, or a MODEM telephone net to conduct communications without limit to range. At the same time, there are such remote communication functions provided as working status (run/stop), working mode (auto/manual) and over-voltage, over-current, high frequency/rotation speed, high/low water temperature, high lubrication oil temperature, low oil pressure, start failure and charger trouble in the main and standby generator sets.

ATS(自动转换)型控制系统

ATS(Automatic Transfer Switch) control system

装有切换转换开关、控制器,面板上装有指示灯,与自动型控制柜配合,可实现市电、机组发电自动转换供电功能。在正常使用状态下,控制箱与市电相连,控制箱内的浮充电器自动给蓄电池充电,保证启动用蓄电池的正常工作。在电网断电、欠压、缺相时,发电机组自动启动,启动成功后,自动转换开关切换供电电路,由机组供电;当市电恢复正常,自动转换开关切换到市电供电,并控制发电机组空载运行至发动机温度平衡并降低后,自动停机。

This system is provided with a fully automatic transfer switch control electric apparatus and an indicator light on the control panel and is coordinated with an automatic type control cabinet thus serving the function of automatic changeover between the power supplied by the commercial electric network and the power generated by the generator set. Under normal conditions, the control box is connected to the power supplied by the commercial electric network, the floating charger in which automatically charges a storage battery and guarantees that it works normally, when it is used to start the generator set; In case that there is an interruption under-voltage or short of phase in the commercial electric network, the generator set is automatically started. With the generator set started up successfully, the automatic transfer switch changes over the power line automatically and the power will be supplied by the generator set; when the commercial electric network resumes its normal power supply the automatic transfer switch changes over to the power line supplied by the commercial electric network and controls the generator set to run with no load until the temperature in the engine is balanced and lowered to stop running automatically.



并机系统

Synchronous parallel control system

有手动、自动、全自动三种。全自动并机柜采用高精密度的负载分配器、自动同步器,可控制装有各种型号调速器的发电机组,可保证机组负荷分配差度不大于5%,自动负载分配、负载变化时的自动投入、解列以及应急自动启动、投入等。

Parallel operation control system falls into 3 types: a hand-operated, an automatic and a semi-automatic parallel operation control system.

In a fully automatic parallel operation cabinet a high-precision load divider and an automatic synchronizer are installed which are used to control the generator set equipped with various types of speed regulators and to ensure that the load distribution difference between generator sets should not be over 5%, the load should be distributed automatically, the generator set should be put into parallel operation or separation automatically, when load changes and should be started and put into parallel operation automatically in case of an emergency.



服务体系

Service system

质量保证 Quality insurance

对我公司提供的各型柴油发电机组,均可享有12个月或1000工作小时(以先到为准)保修,一切因发电机组制缺陷引起的故障,均我厂负责联系修复。机组易损件、日常使用消耗件、人为错误操作,疏忽保养导致的损不在此质量保证范围内。

For each category generator provided in our company, can share 12 months or 1,000 work hours maintenance. All the troubles arise from the structure defect, we agree to repair. Otherwise, we don't provide the quality insurance such as wearing parts, daily used consumable parts, wrong man-made operation and maintainer ignorance.

售前服务 Before sales service

售前免费提供负载容量分析、选型配套、技术咨询、协助用户机房布置、设备安装规划。Free charge on providing with burden capacity analysis category selection technology consultation, assistance with machinery room collocation and facilities installation planning.

培训 Training

为使用户正确掌握各型发电机组的操作、使用和保养,我厂特地为用户免费提供现场或到我公司培训中心接受不同类型发电机组的培训课程。

For helping user to master the operation, usage and the maintenance of different kinds of generators correctly, we offer the training service for free charge.

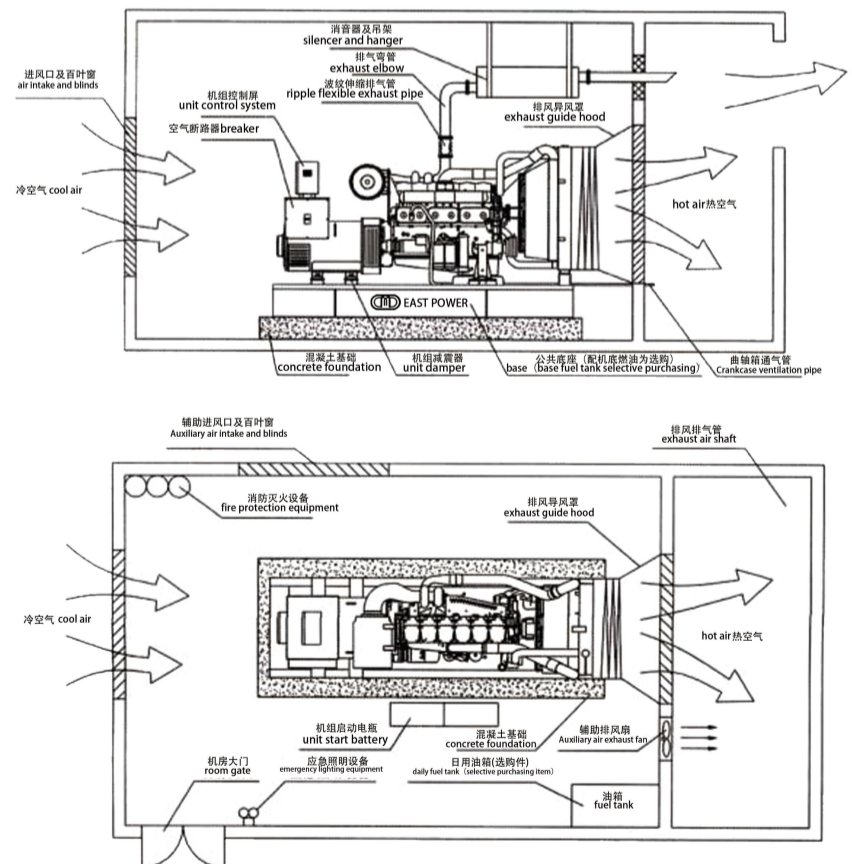
售后服务 Aftersales service

东电力十分重视售后支持,对用户建立电脑存档,跟踪服务,定期巡检,维修中心具有快速反应的管理体系,接到服务请求后,做到24小时反应,以最快速度赶到设备现场并着手处理故障。

EAST POWER think highly of the support after selling, establishing the computer backup and follow the service to the customer, check up periodically, the repair center has the management system that fleetness respond, after receiving the service claim serve for 24 hours to eliminate the breakdown.

机房安装示意图

Schematic diagram of genset room installation



以上示意图为所推荐的东电力标准机房及安装方法,正确安装排气、排风及曲轴箱通风管,正确选择润滑油、燃油及冷却(防冻液或防锈液),对发电机组的正常及输出额定功率至关重要!详细内容可向本公司技术服务部联系。Above diagram shows the standard machine room and installation methods recommended by EAST POWER, the correct operations like installing the exhaust tubes and crankcase air tube, selecting the lubricating oil, fueling and cooling fluid like anti-freezing fluid or an trust fluid are vital to the correct use and output rated power of generating set! Please contact our technical service department for details.